

**ISOTALCO** produced ceramic component on customer design offering solutions through competence, professionalism and continuous support .

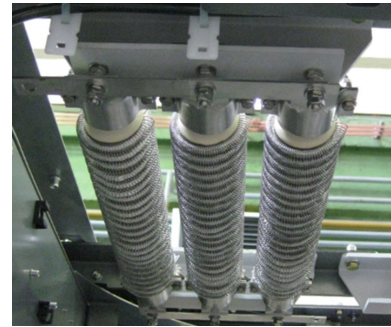
Ceramic core, tubes and tooth porcelain are the most widely adopted solution to support electrical components based on wirewound, edgewound, glazed or cemented bodies.

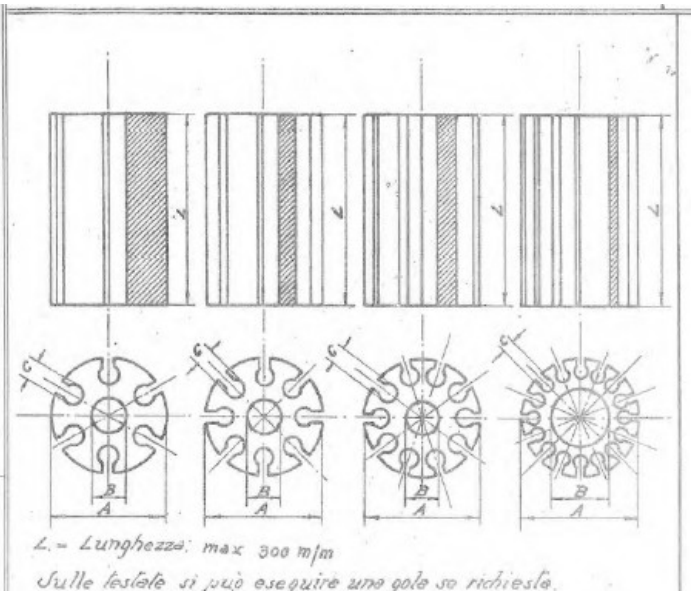
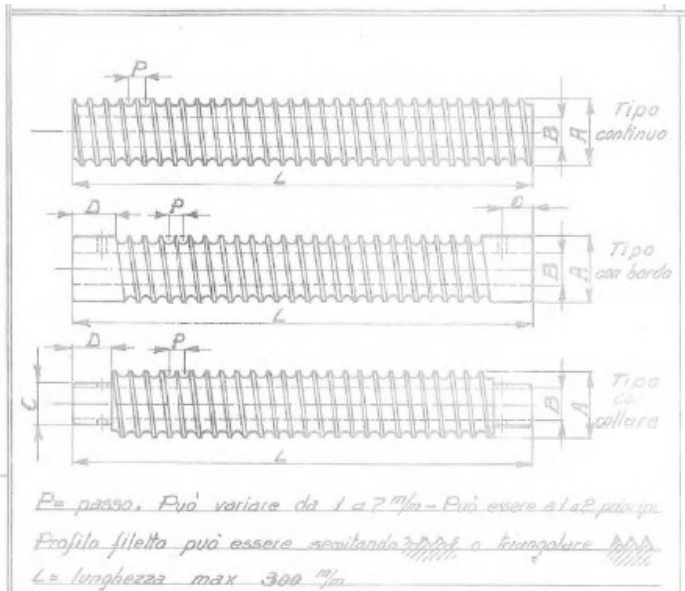
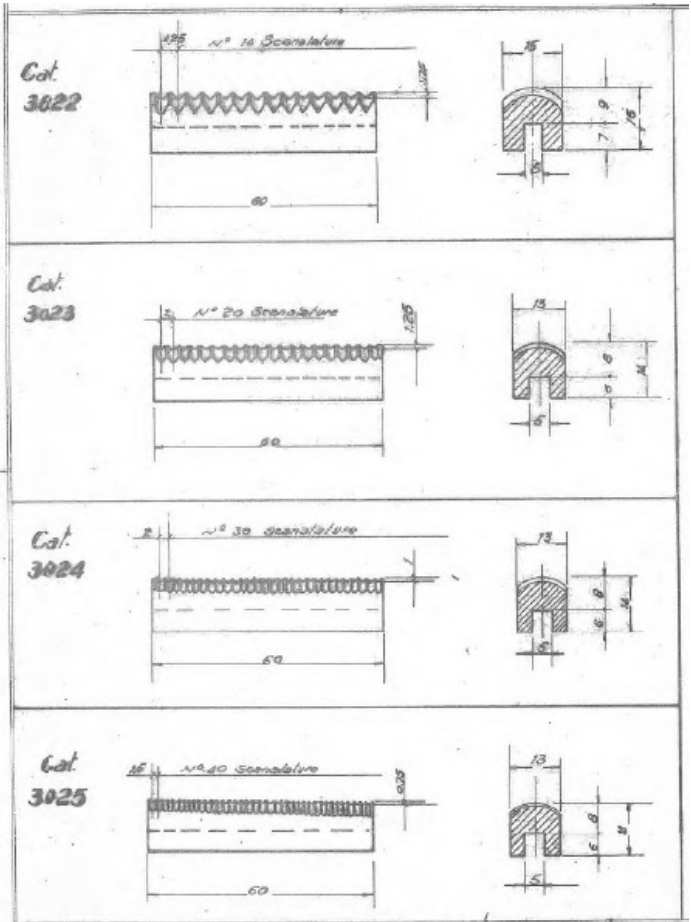
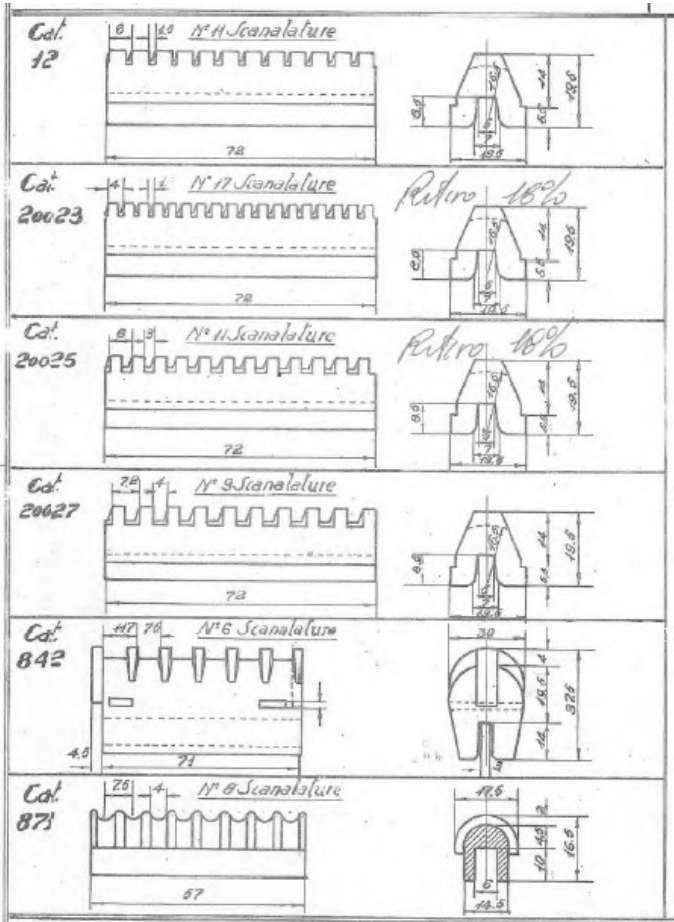
Tubes are also installed on industrial application as rollers for high temperature applications or support for thermal sensors.

Any risk of fire is completely eliminate and there is no emission of toxic or corrosive substances.

The working temperature is guaranteed from  $-50^{\circ}\text{C}$  up to  $1000^{\circ}\text{C}$  as static condition. Thermal cycling and shocks will need to be discussed case by case to optimize design, ceramic material and final solution.

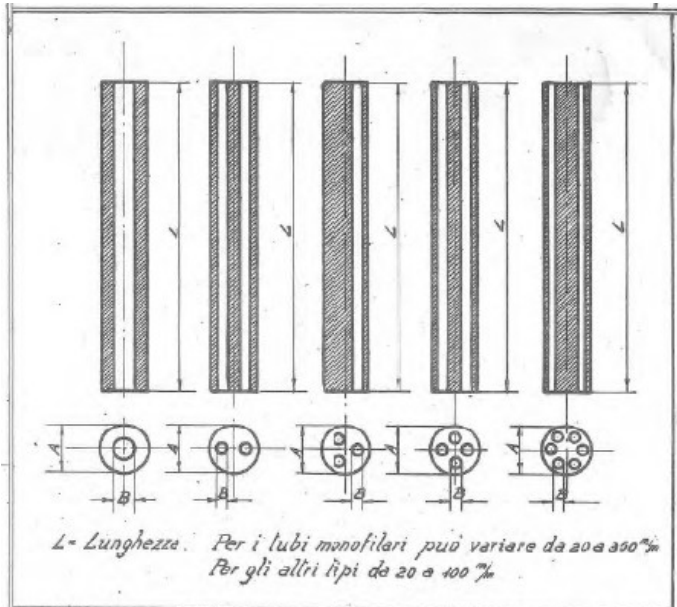
The mechanical and structural characteristic make these isolators suitable to operate on board to running equipments .



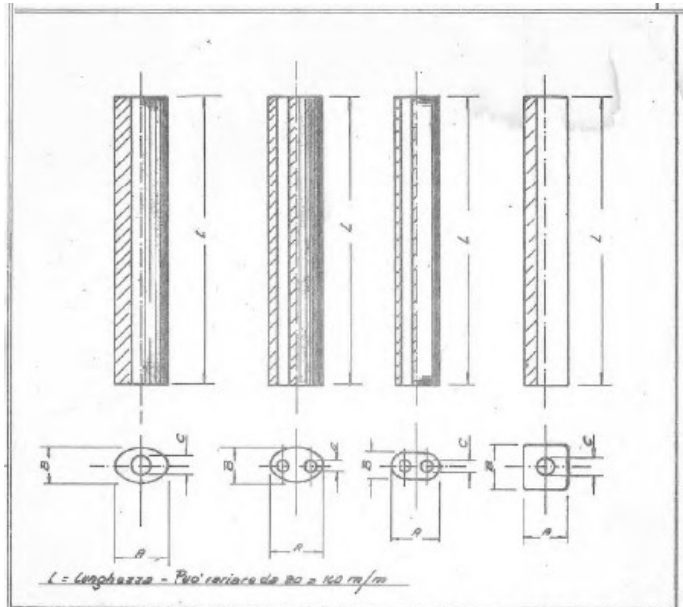


Tipo continuo		Tipo con bordo				Tipo con collare			
A	B	A	B	C	D	A	B	C	D
15	35	15	8,5	8	15	15	6,5	12	15
20	10	20	10	8	15	20	10	15	15
25	12	25	12	8,5	17	25	12	19	15
30	14	30	14	8,5	17	30	14	22	15
35	19	35	19	10	20	35	19	27,5	15
40	22	40	22	10	20	40	21,5	31	17
45	22	45	22	10	20	45	24	36	17
50	28	50	28	10	20	50	24	40	20

Tipo a 6 Canali			Tipo a 8 Canali			Tipo a 10 Canali			Tipo a 16 Canali		
A	B	C	A	B	C	A	B	C	A	B	C
13	3	26	22	5,5	4	56	23	7,5	74	47	7,5
15	3,5	27	26	7,2	4	40	14	6,2			
18	4,5	37	28	9	4,5	36	14	5			
20	4,5	4	30	8	5	Tipo a 12 Canali					
26	7,5	5	36	9,5	5	A	B	C			
32	9	6,5	45	15	7,5	50	21	7			
36	9,5	6,5				56	23	7,5			
						60	26	7			



Tubelli tondi 1 foro		Tondi 2 fori		Tondi 3 fori		Tondi 4 fori		Tondi 6 fori									
A	B	A	B	A	B	A	B	A	B								
2	1	10	5	10	9,5	3,5	1	16	3	7	1,2	5	1,2	15	4,5	6	1
3	2	11	6,5	19	9,5	4	1	16	4	8,5	2,5	6,5	1,5	17,5	5,5	10	2,3
4	2,5	12	6	20	10	6,3	1	26,5	6	12	3,5	8	1,2			11	2,5
5	2,5	13	6,5	25	12	6,3	2					8,5	2			13	3
6	3	14	7	30	15	8	2,2					10	2,5			14	3,5
7	3,5	15	8	35	15	9	2,5					11	3			15	2
8	4	16	9			10	3					12	3,5			16	4
9	4,5	17	9			12	3					13	4			19	4,5



monofilari ovali			bifilari ovali			bifilari piatti			tubetti quadrati					
A	B	C	A	B	C	A	B	C	A	B	C			
11	8	5	12	8,2	3,5	9,5	6,5	2	4,5	3	1	7	7	4
						12	6,5	4	7,5	5	1,5	9	9	5
						13	7,2	4	16,5	7,8	4	11	11	6,5
						15,5	9	5	18,9	9,5	5,5	16	16	6
						18,5	7,3	2,5	19	11	6,5			
						19,5	12	6,5	8	6,5	2			
						20,5	12	7						

External diameter of tubes can reach up to 70mm with a length of 600mm also as function of the thickness